

... « » ( . )  
30.12.2014 .

:  
R = /

- ( / . . . ).  
- ( / . . )

<https://torgi.gov.ru> ( )

2014 , 1 .  
. 14-15 . 39.11  
( 1,5% )

30 . ( . 17 . 39.11 ) .

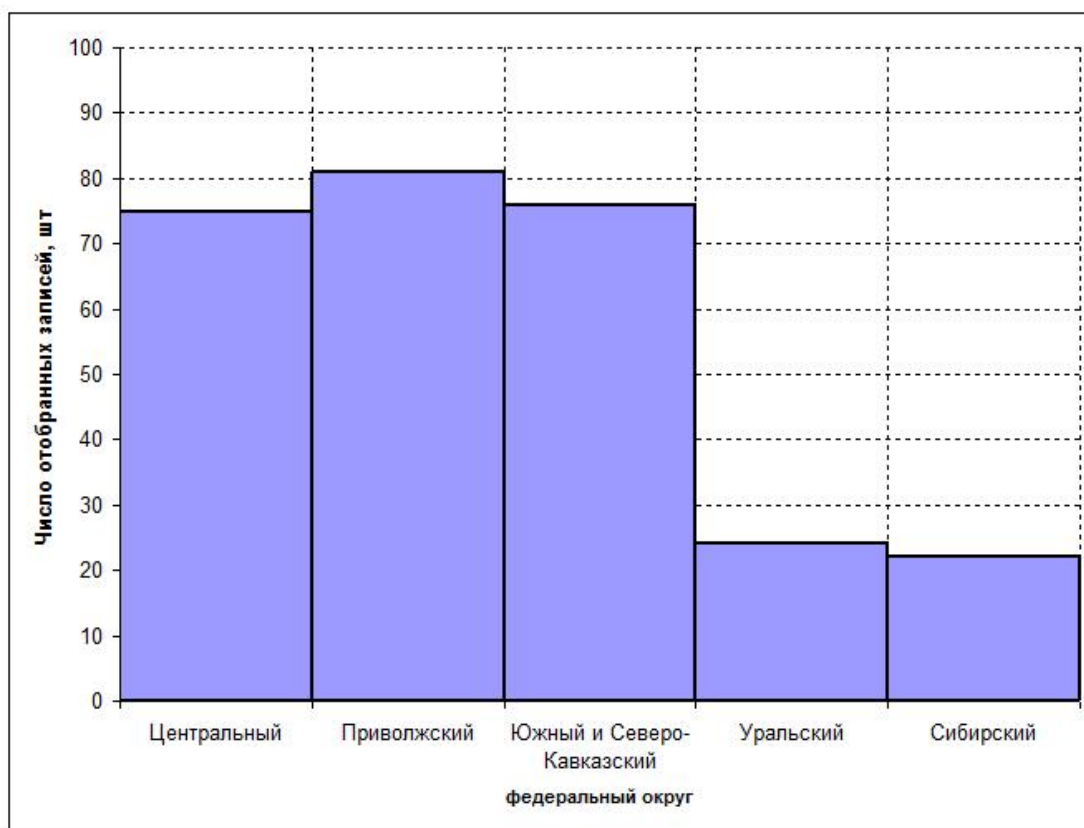
- , - .  
; 3) - ; 4) ; 1) ; 2)

▪ - .  
. .11 ' 39.8 ,

3 49  
( . .1)  
2014 , ( - )  
(81 .).

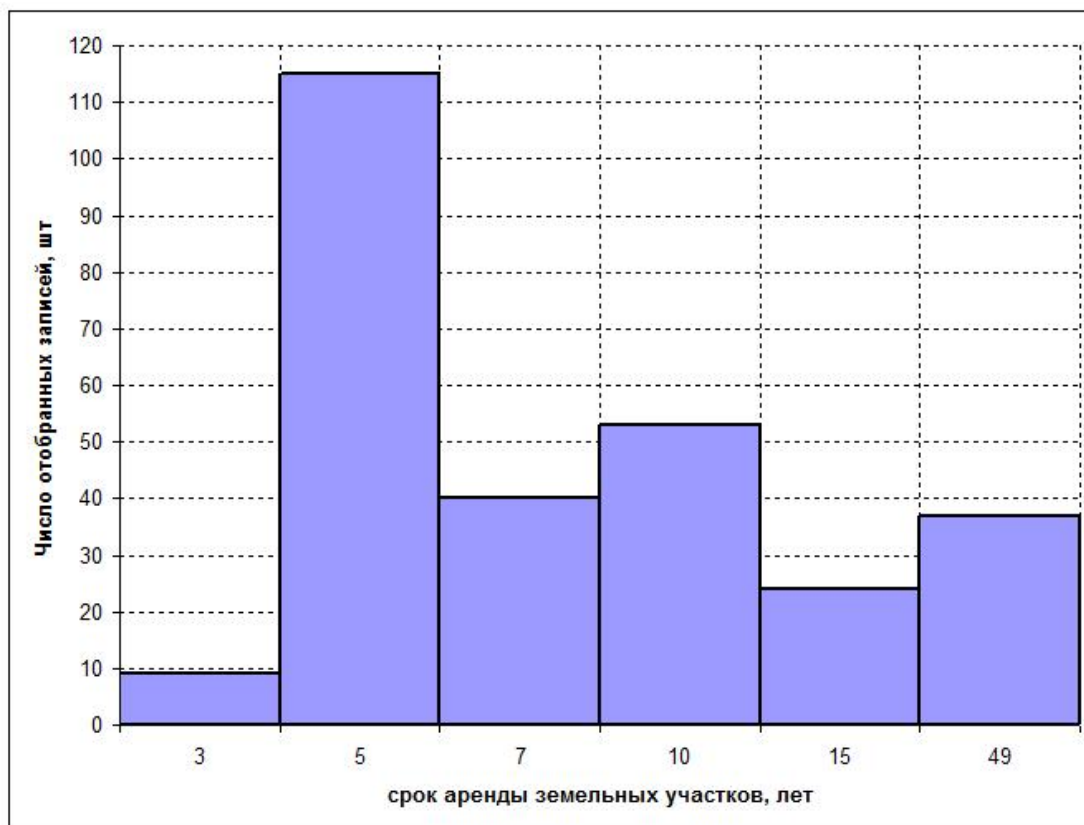
(24 22 )

5, 10 49 ( . .2).



.1.

2014 ,



.2.

2014 ,

2014 ,

	( )						
	3	5	7	10	15	49	
	3	13	38	6	13	2	75
	0	34	0	12	0	35	81
-	0	52	0	23	1	0	76
	3	11	0	0	10	0	24
	3	5	2	12	0	0	22
	9	115	40	53	24	37	278

2014 ,

	( )						
	3	5	7	10	15	49	
	0	0	0	0	1	0	1
	1	0	0	0	0	0	1
	0	5	0	6	0	0	11
	0	0	0	0	0	0	0
	0	0	0	0	3	0	3
	1	0	0	0	0	0	1
	1	6	0	0	0	0	7
	0	0	0	0	0	0	0
	0	0	0	0	9	0	9
	0	2	0	0	0	0	2
	0	0	38	0	0	2	40
	3	13	38	6	13	2	75
	0	0	0	0	0	20	20
	0	0	0	0	0	0	0
	0	32	0	0	0	0	32
	0	0	0	0	0	5	5
	0	0	0	5	0	0	5
	0	0	0	0	0	0	0
	0	2	0	1	0	0	3
	0	0	0	0	0	1	1
	0	0	0	0	0	0	0
	0	0	0	6	0	9	15
	0	34	0	12	0	35	81
, -	0	1	0	0	0	0	1
	0	0	0	0	0	0	0
	0	9	0	2	0	0	11
	0	1	0	0	0	0	1
	0	41	0	7	0	0	48
	0	0	0	14	0	0	14
	0	0	0	0	1	0	1
, -	0	52	0	23	1	0	76
	0	0	0	0	0	0	0
	0	8	0	0	0	0	8
	3	3	0	0	0	0	6
	0	0	0	0	10	0	10
	3	11	0	0	10	0	24
	0	0	2	12	0	0	14
	1	0	0	0	0	0	1
	1	0	0	0	0	0	1
	0	3	0	0	0	0	3
	1	2	0	0	0	0	3
	3	5	2	12	0	0	22

2, (38)

7, 2 - 49 ). 9

15 - 5 . 6 - 5 , 5

(32 5 ).

3, 7, 15 15 (6 - 20 , 9 - 49 ). 49 .

(48 76, 63%

41 5 , 7

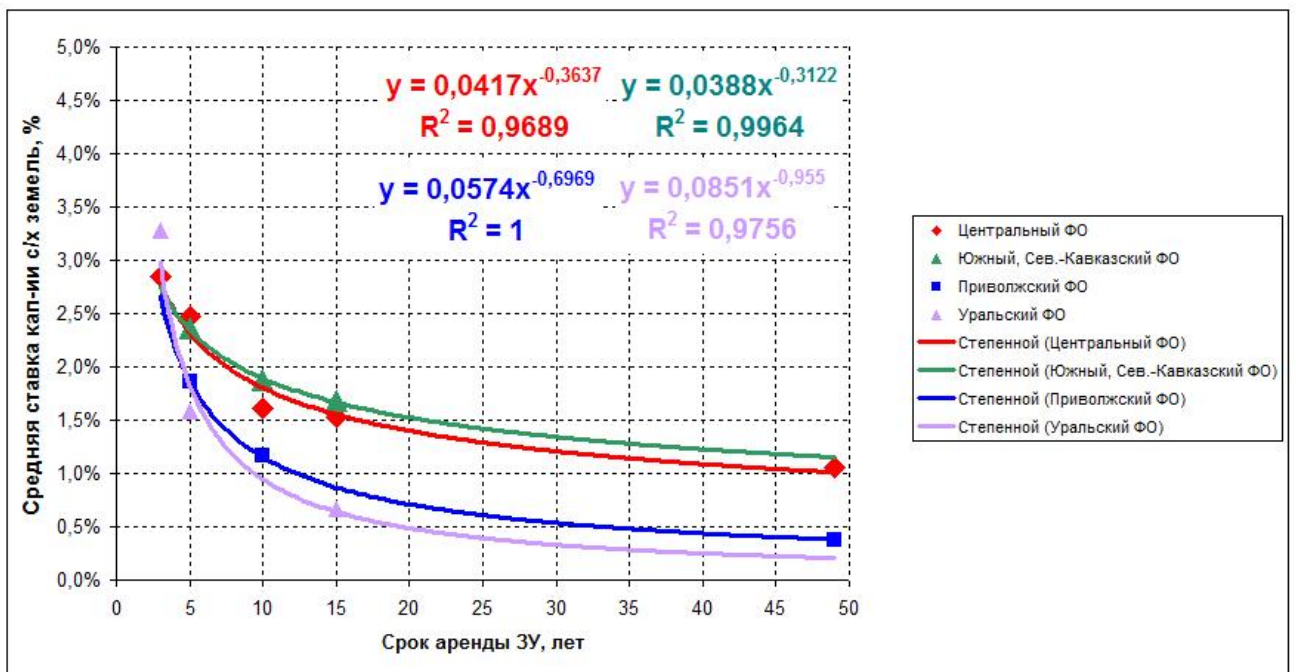
10 , 10 . 9 - 14 5 .

5 - 10 15 , - 8

7, 10, 49

(14 , 64% ). 12

10 .



.3.

	( )					
	3	5	7	10	15	49
	-	-	-	-	0,85%	-
	2,47%	-	-	-	-	-
	-	3,51%	-	1,61%	-	-
	-	-	-	-	2,42%	-
	2,94%	-	-	-	-	-
	3,14%	1,90%	-	-	-	-
	-	-	-	-	1,31%	-
	-	1,57%	-	-	-	-
	-	-	0,91%	-	-	1,06%
	<b>2,85%</b>	<b>2,47%</b>		<b>1,61%</b>	<b>1,53%</b>	<b>1,06%</b>
	-	-	-	-	-	0,23%
	-	1,81%	-	-	-	-
	-	-	-	-	-	0,23%
	-	-	-	1,22%	-	-
	-	2,61%	-	1,70%	-	-
	-	-	-	-	-	0,77%
	-	-	-	-	-	-
	-	-	-	1,01%	-	0,74%
		<b>1,86%</b>		<b>1,16%</b>		<b>0,38%</b>
	-	2,19%	-	-	-	-
	-	2,73%	-	0,70%	-	-
	-	2,26%	-	-	-	-
	-	2,28%	-	0,80%	-	-
	-	-	-	2,58%	-	-
	-	-	-	-	1,68%	-
	<b>..</b>	<b>2,36%</b>		<b>1,87%</b>	<b>1,68%</b>	
	-	-	-	-	-	-
	-	1,41%	-	-	-	-
	3,28%	2,06%	-	-	-	-
	-	-	-	-	0,67%	-
	<b>3,28%</b>	<b>1,59%</b>			<b>0,67%</b>	
	-	-	2,58%	0,83%	-	-
	1,36%	-	-	-	-	-
	5,12%	-	-	-	-	-
	-	2,97%	-	-	-	-
	4,08%	2,65%	-	-	-	-
	<b>3,52%</b>	<b>2,84%</b>	<b>2,58%</b>	<b>0,83%</b>		

2014 ,  
: [http://consalt.ucoz.com/selkhozemlja\\_stavki\\_kap.xls](http://consalt.ucoz.com/selkhozemlja_stavki_kap.xls)

( . .3).

$$\begin{aligned}
 &: R = 0,0417 * T^{-0,3637} \\
 &: R = 0,0574 * T^{-0,6969} \\
 - &: R = 0,0388 * T^{-0,3122} \\
 &: R = 0,0851 * T^{-0,955}
 \end{aligned}$$